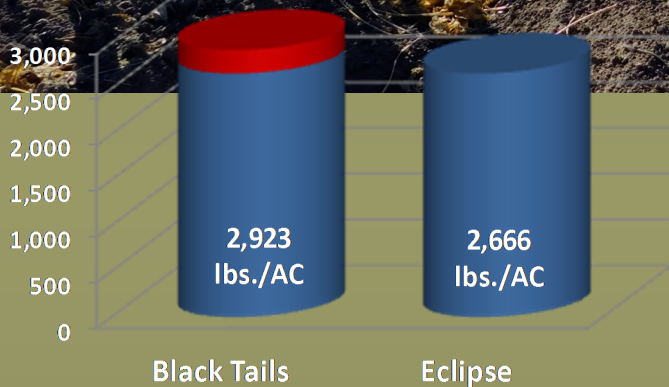
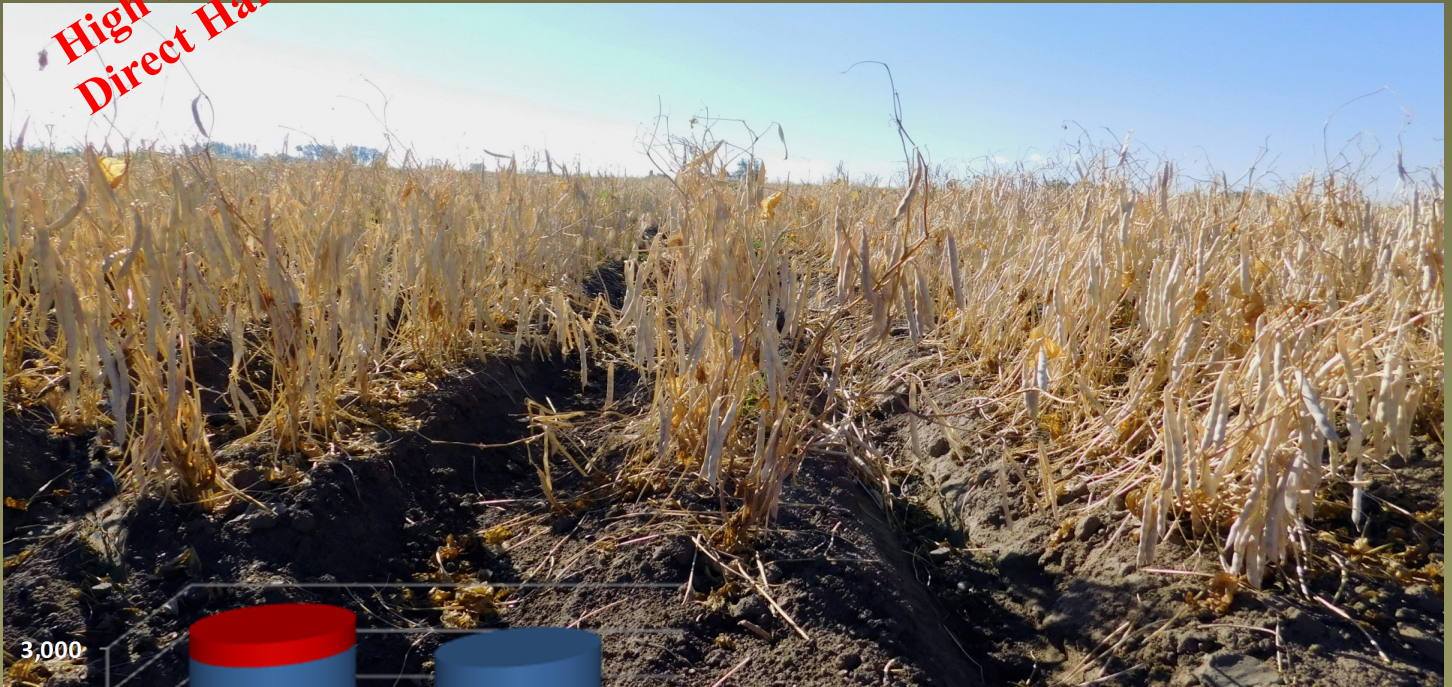


BL BLACK TAILS

NEW!!
High Yielding and
Direct Harvestable



Black Tails is a new black bean variety that has shown good adaptability to North Dakota, Michigan, New York, Manitoba, and Ontario production regions.

A consistent performer throughout the trialing process and in commercial production, its upright architecture and excellent yield potential make it an excellent choice for growers needing a slightly earlier variety.

Assuming the 250 lbs./AC* yield increase over Eclipse, profit would increase \$75/AC on \$30/cwt beans. This would amount to \$7,500 increased profit over Eclipse on 100 acres of production.

Black Tails is patent pending and is protected by U.S patent law. Use is restricted to producing one commercial food crop. Any other uses are strictly prohibited and must be approved of by the Owner and/or Breeder.

- Excellent upright architecture suitable for direct harvest.
- Matures 99-103 days or about the 1-2 day's later than Eclipse**
- Approximate seed count is 2,405 sds./lb.; slightly larger than Eclipse***
- Preliminary testing shows that Black Tails has the "I" gene for bean common mosaic virus and has shown rust resistance in the CSU rust screening trial.

**TO PURCHASE SEED:
CONTACT YOUR LOCAL DEALER**

*Yield data based on 20 yr./locations of data.

**Maturity data is based on 16 yr./locations of data .

***Seed count data is based on 20 yr./locations of data.

Data from 2013 - 2016 with trials in Forest River, Hatton, Prosper, and Buxton.

BL Black Tails was developed through ProVita, Inc.'s black breeding program through a contract with Cooperative Elevator Co. and is the sole property of Cooperative Elevator Co.

Plant Variety Protection for BL Black Tails is applied for.
Unauthorized propagation of this variety is prohibited.

**Utility Patent for BL Black Tails is pending.
Unauthorized propagation of this variety is prohibited by law.**

Black Tails is the sole property of Cooperative Elevator Co. and is protected by U.S. Plant Variety protection and a U.S. Utility Patent. Any use of this variety for any purpose without express written consent of Cooperative Elevator Co is prohibited under U.S. Patent law.

All variety information presented herein is based on field and laboratory observations. Actual crop yield and quality are dependent upon many factors beyond our control. Since environmental conditions and local practices may affect variety characteristics and performance, we disclaim legal responsibility therefore. Read all tags and labels. They contain important conditions of sale, including limitations of warranties and remedies.